

riskHive® Enterprise Risk Manager®

Secure, cloud-based RAIDO database

System specification and features V5.0 r100

Designed to provide a flexible and cost-effective way of centralising risk management and reporting, riskHive quickly and effectively imports, consolidates and maintains your existing risk registers in a portfolio database allowing you to start generating information and reports straight away by importing current Excel risk registers.

System specification

- Industrial-strength professional database application
 - 2048-bit data encryption and SSL application security
 - Single sign-on (SSO) SAML 2 multi-level IP capability
 - Super-secure 'Official' private cloud or 'on-premises' hosting
 - Browser-based application delivery on any platform
 - No client-side downloads, plug-ins or add-ins required
 - High resilience, low data bandwidth, auto-archiving
 - Triple-system deployment: Live, Staging and Training
 - Supports 25 - 25,000 system users (<250 concurrent sessions)
 - Super-fast deployment: up and running in <24 hours
 - Start small and scale-up only when you need to
 - Simple complete system backup, transfer and restore
 - Sub-Google interface speed - fast click-responses
-

System features

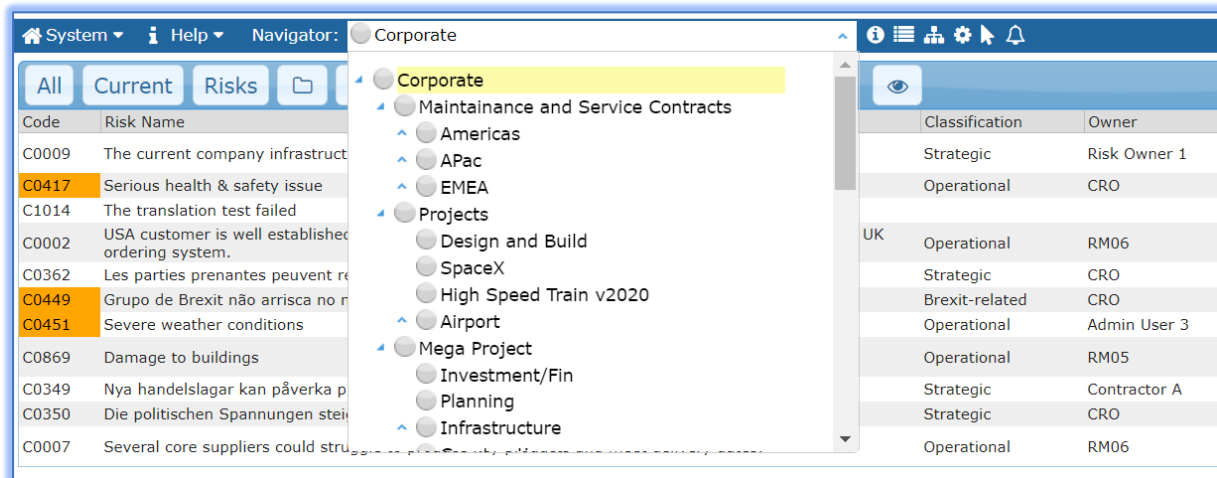
- Manage risks, opportunities, assumptions, issues and actions
 - Super-configurable user interface and reporting
 - Alignment with ISO, AU/NZ and COSO standards
 - Project > Programme > Portfolio aggregation system
 - Multiple hierarchical data organisation structures
 - Simultaneous multiple languages and currencies
 - Qualitative and quantitative assessment and reporting
 - Emerging risk management process (NEC3 Trend)
 - Fast and easy import / export of data and information
 - Advanced interactive data graphics; bowties, word-clouds, map-views, radials, heatmaps and risk-radars
 - Built-in Monte Carlo simulation and Analysis tools
 - Built in multi-level gantt schedule designer and editor
 - Independent and combined Cost and Schedule Risk Analysis
-

riskHive® ERM® application features

Manage project, program, portfolio or enterprise risks

The hierarchical tree structure can be set up for different projects, geographies business units, programs etc. Each of these risk registers can then be configured to show different frameworks, scoring systems, workflows & required fields.

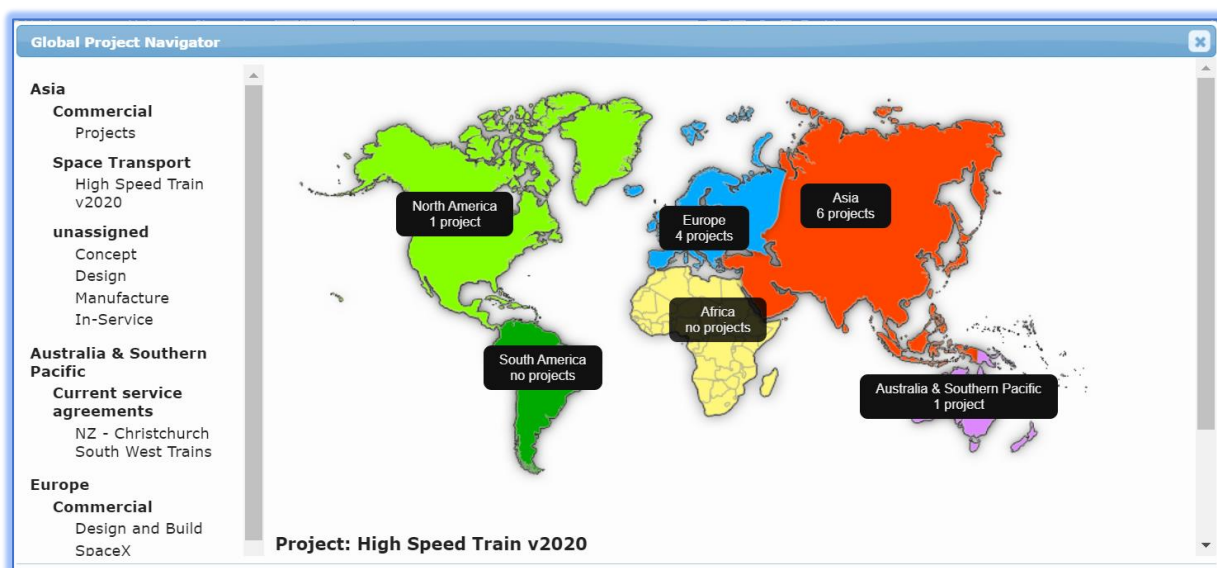
The ability to aggregate risks provides a helicopter view of the organisation for decision makers.



The screenshot shows the riskHive ERM application interface. On the left, there is a hierarchical tree structure under the 'Corporate' category. The tree includes 'Maintenance and Service Contracts', 'Americas', 'APac', 'EMEA', 'Projects', 'Design and Build', 'SpaceX', 'High Speed Train v2020', 'Airport', 'Mega Project', 'Investment/Fin', 'Planning', and 'Infrastructure'. On the right, there is a table showing risk registers. The table has columns for 'Classification' and 'Owner'. The data is organized by region (UK, Americas, APac, EMEA) and then by project type (Operational, Strategic). The 'UK' section shows risks for 'Operational' and 'Strategic' categories, with owners like 'RM06', 'CRO', 'Admin User 3', 'RM05', 'Contractor A', and 'CRO'. The 'Americas' section shows risks for 'Operational' and 'Strategic' categories, with owners like 'RM06' and 'CRO'. The 'APac' section shows risks for 'Operational' and 'Strategic' categories, with owners like 'RM06' and 'CRO'. The 'EMEA' section shows risks for 'Operational' and 'Strategic' categories, with owners like 'RM06' and 'CRO'.

Global navigator map view

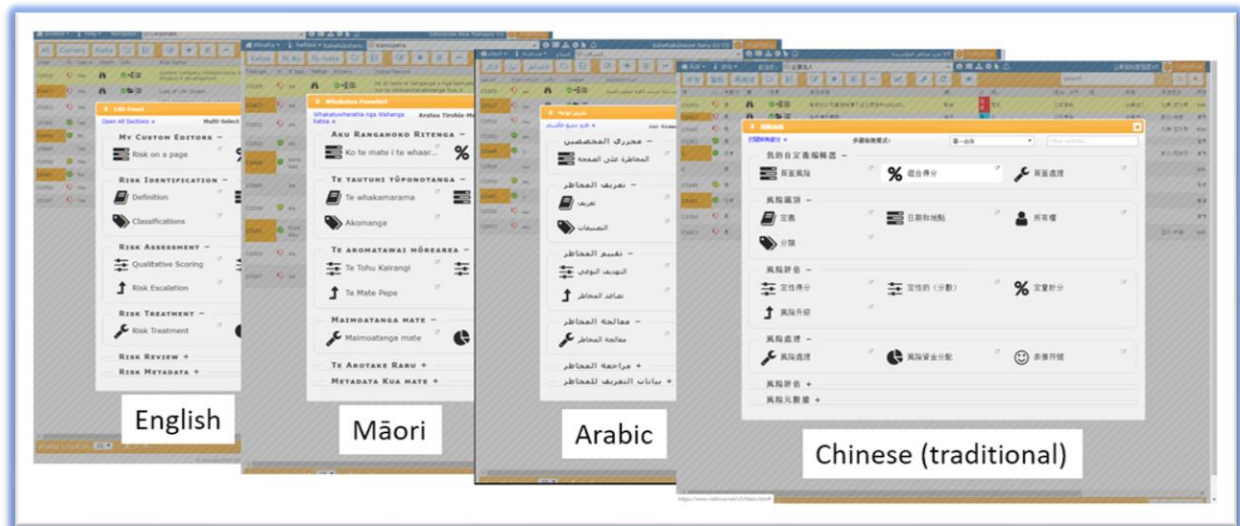
Displays projects overlaid onto their continental locations. Click-through on continent to see projects by category and then select project to view in main system grid.



The screenshot shows the 'Global Project Navigator' map view. On the left, there is a list of project categories and their counts. The categories are: 'Asia' (Commercial, Projects), 'Space Transport' (High Speed Train v2020), 'unassigned' (Concept, Design, Manufacture, In-Service), 'Australia & Southern Pacific' (Current service agreements, NZ - Christchurch, South West Trains), and 'Europe' (Commercial, Design and Build, SpaceX). On the right, there is a world map with project counts by continent: North America (1 project), Europe (4 projects), Asia (6 projects), Africa (no projects), South America (no projects), and Australia & Southern Pacific (1 project). The map is color-coded by continent: North America (green), Europe (blue), Asia (red), Africa (yellow), South America (green), and Australia & Southern Pacific (purple). The project 'High Speed Train v2020' is highlighted in the map.

Interface in over 100 national languages & currencies

Designed to work with Google Translate extension, the application can be viewed in 109 different languages (and counting). Different currencies can be assigned to projects, and this flexibility means trans-national users can view the same screen at the same time in their own national language and local currency. Both the application controls and text-entry information are translated in real-time.



Manage tasks / email alerts

riskHive Enterprise Risk Manager can be configured to support your workflows. Our easy to manage 'Monitor' functionality means that users can be emailed when things of note happen in the system. Monitors can be put in place for risk escalation, risk or action owner changes, when actions or risk reviews are coming up, or are overdue. Email notifications can be configured to email the appropriate person as soon as these things happen, or in a digest that's scheduled to be sent once a day, or at the start of the week, or another time of the organisation's choosing.

From: RCL-NO-REPLY@riskhive.com <RCL-NO-REPLY@riskhive.com>

Sent: 25 April 2020 18:35

To: Marilyn Monroe <marilyn.monroe@riskhive.com>

Subject: RiskHive - actions for review.

Action Code: 187, Due Date 31/05/2020:

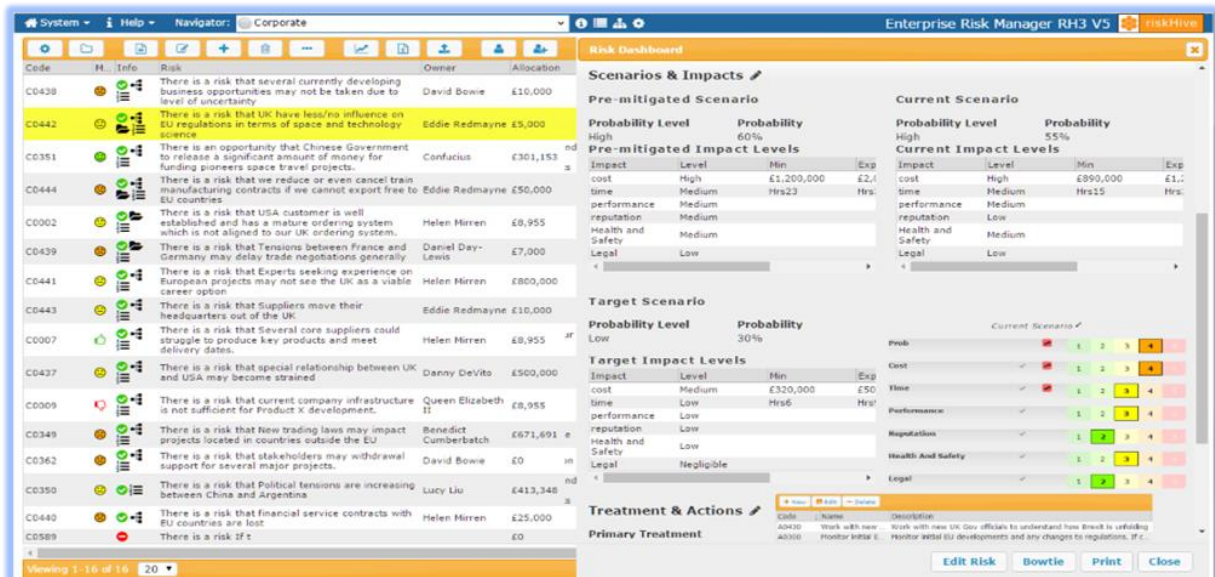
Owner	Description	Finish Date	Action Status
Marilyn Monroe	Identify what changes we would need to make to our vessels in order to be awarded the maximum score in the technical evaluation of the tendering process	30/04/2020	Infomational: Overdue date in 4 days time

Site URL

<https://www.riskhive.net/MM>

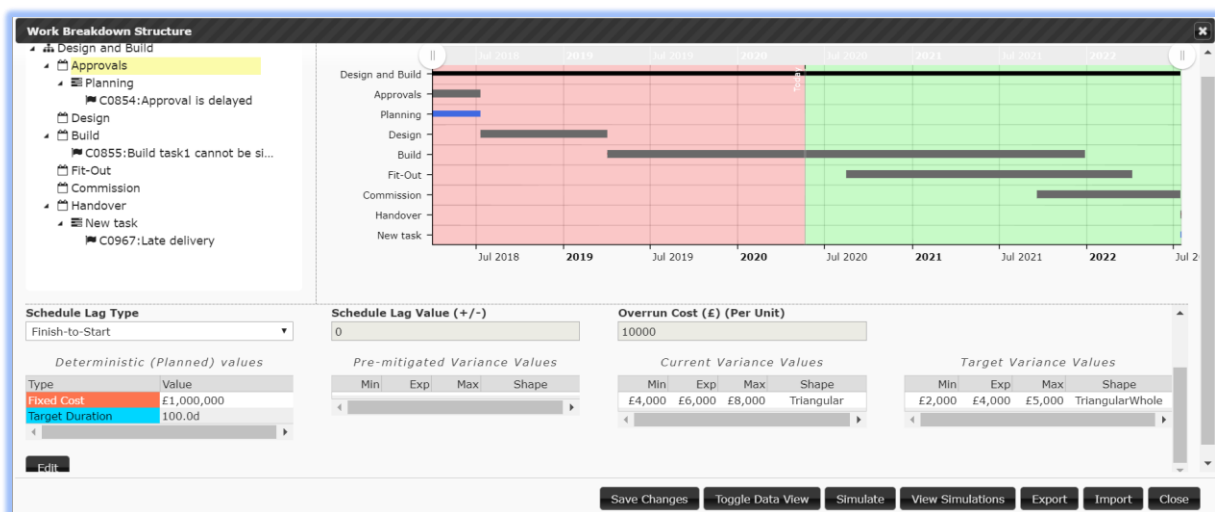
Review session mode - made to make risk reviews

riskHive supports workflow for interactive risk reviews. Using a split-screen approach, a list of risks, whether contained in a single project, or a subset from the whole portfolio, can be systematically reviewed, amended (with logs) and checked-off one-by-one. A configurable data panel displays editable detail. The session work order can be captured, and a review session manager stores metadata like session participants and minutes.



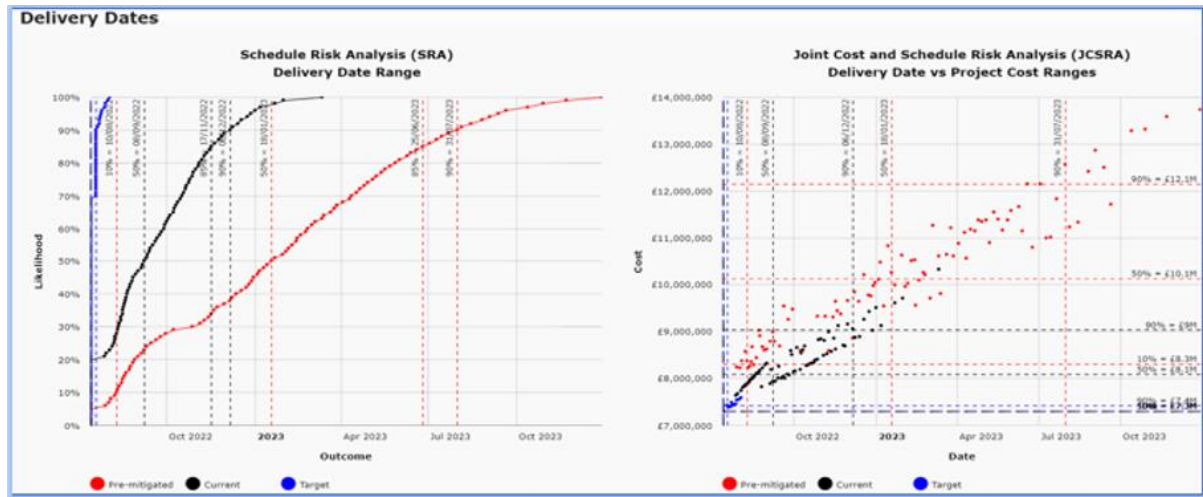
Schedule Risk Analysis (SRA)

The system's intuitive, online schedule builder allows risk managers to rapidly construct a project schedule. This can be cost/resource loaded, with risk events being added to individual tasks or phases. Users can quickly run different scenarios on options for decision analysis.

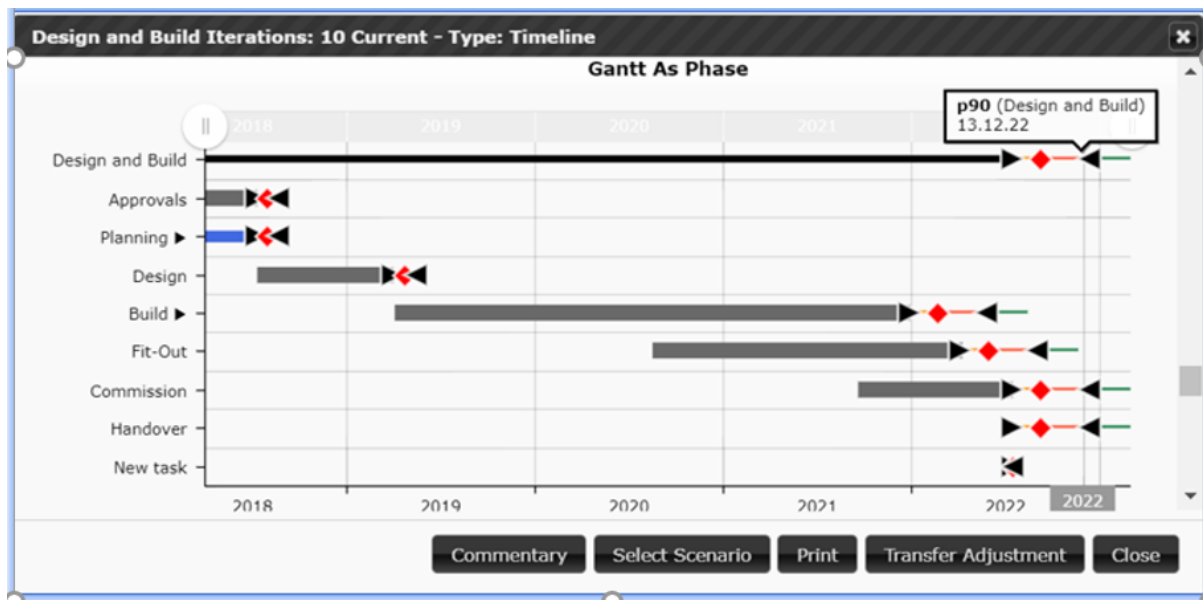


Monte Carlo simulation

The system includes Monte Carlo simulation for quantitative risk analysis on time and cost impact of risk events. Joint confidence levels are calculated for combined cost and schedule risk analysis. All results are replicable and are archived for later retrieval and audit.



Online risk analysis of costs is as simple as clicking a mouse, as is the creation of risk-adjusted schedules. With riskHive ERM there is no need to export data to a 3rd party tool for quantitative analysis as all the reports and insights are generated within the system. Enterprise Risk Managers uses an improved version of the same industry-standard Monte Carlo simulation engine that is in riskHive's other award-winning analytical tool, Arrisca Analyser.



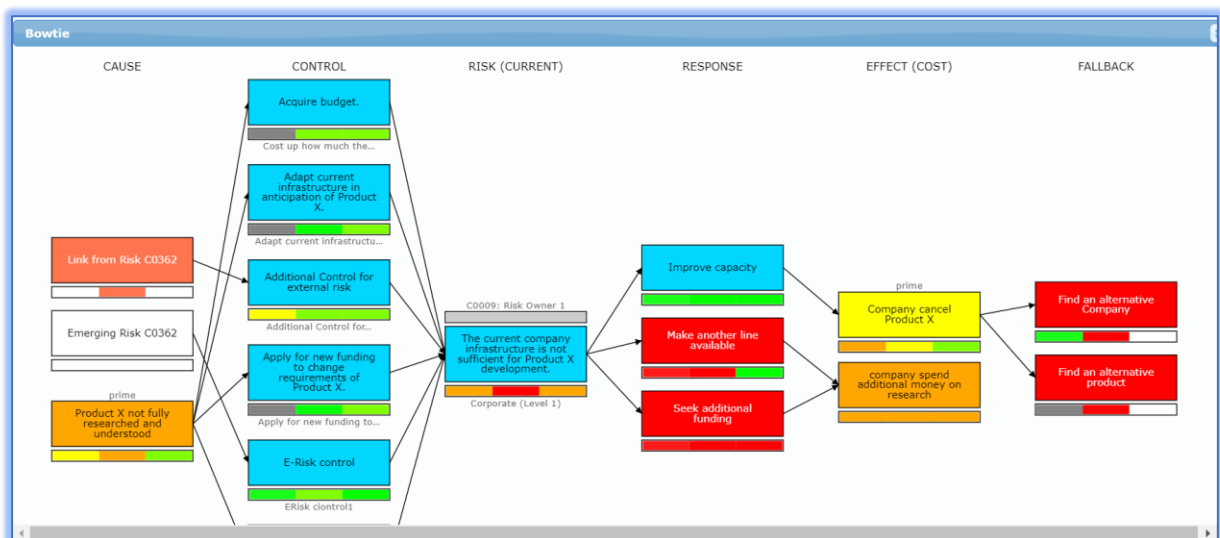
Word clouds

Word clouds expose common themes and subjects by displaying the most frequently occurring words in the database. These can be filtered individually and composed of cause, effect or all description fields. They are a great way to summarise and present key risk themes to an audience as well.



Bow-Tie graphical interface

The interactive graphics of our Bow-Tie visualiser allow the user to more effectively define the threat-space by describing not just risk line items, but multiple causes and effects, active controls, responses and fallback actions. The risk information in the database can be edited and added to using the graphical interface with all changes being committed back into the system for management. Bowties can also be generated from multiple risks or word-searches.



Duplicate / common risk finder

The system features an automated search facility to identify common words or even sentences within the database. All description fields may be interrogated and then applied as a filter to view in the main grid.

Risk Count	Word	Risks	Search?
13	damage	Aus SFF 0348, Aus SFF 0374, Aus SFF 0375, CHI BEB 0333, IRE DT 0403, IRE DT 0405, M&S Contracts 1020, SPN MM 0386, UK LU 0336, UK LU 0337, UK LU 0345, USA CT 0370, USA CT 0797	X
13	delays	CHI BEB 0359, CHI BEB 0360, DMK MOBT 0378, IRE DT 0401, IRE DT 0402, IRE DT 0404, IRE DT 0405, NZ CSWT 0352, NZ CSWT 0353, UK LU 0290, USA CT 0280, USA CT 0319, USA CT 0321	X
11	Customers	Aus SFF 0373, CHI BEB 0333, CHI BEB 0347, DMK MOBT 0367, ITL RSE 0400, JPN TWB 0338, M&S Contracts 0281, SPN MM 0388, SPN MM 0389, UK LU 0346, UK LU 0443	X
9	maintenance	Arg BAS 0376, DMK MOBT 0367, DMK MOBT 0368, JPN TWB 0331, M&S Contracts 0320, M&S Contracts 0332, NZ CSWT 0011, UK LU 0010, USA CT 0319	X
9	Loss	Arg BAS 0376, Arg BAS 0383, DMK MOBT 0367, DMK MOBT 0378, M&S Contracts 0868, M&S Contracts 1020, SPN MM 0386, SPN MM 0393, USA CT 0797	X
9	years	DMK MOBT 0366, DMK MOBT 0430, ITL RSE 0398, JPN TWB 0329, JPN TWB 0330, M&S Contracts 0332, SPN MM 0388, SPN MM 0389, USA CT 0355	X
9	trains	DMK MOBT 0368, DMK MOBT 0378, DMK MOBT 0380, NZ CSWT 0011, NZ CSWT 0012, NZ CSWT 0352, UK LU 0010, UK LU 0326, UK LU 0336	X
8	transport	Arg BAS 0376, Aus SFF 0374, DMK MOBT 0380, ITL RSE 0394, SPN MM 0386, SPN MM 0388, SPN MM 0389, UK LU 0326	X
8	train	Arg BAS 0382, Arg BAS 0383, DMK MOBT 0367, DMK MOBT 0368, DMK MOBT 0379, NZ CSWT 0353, UK LU 0337, UK LU 0345	X
8	increased	Aus SFF 0356, IRE DT 0403, ITL RSE 0399, JPN TWB 0331, M&S Contracts 0996, UK LU 0289, UK LU 0337, USA CT 0369	X

Viewing 1-10 of 277 10

Sentences

Risk Count	Sentence	Risks
2	Loss of life	Arg BAS 0383, SPN MM 0386
2	Water Buses may need to be removed from service	JPN TWB 0329, JPN TWB 0330

User activity recorder

The system keeps track of users logging-in and logging-out and records what they have done, so activity can be viewed over time. This makes it simple to identify users who have been the most/least active at updating records and data within the system.

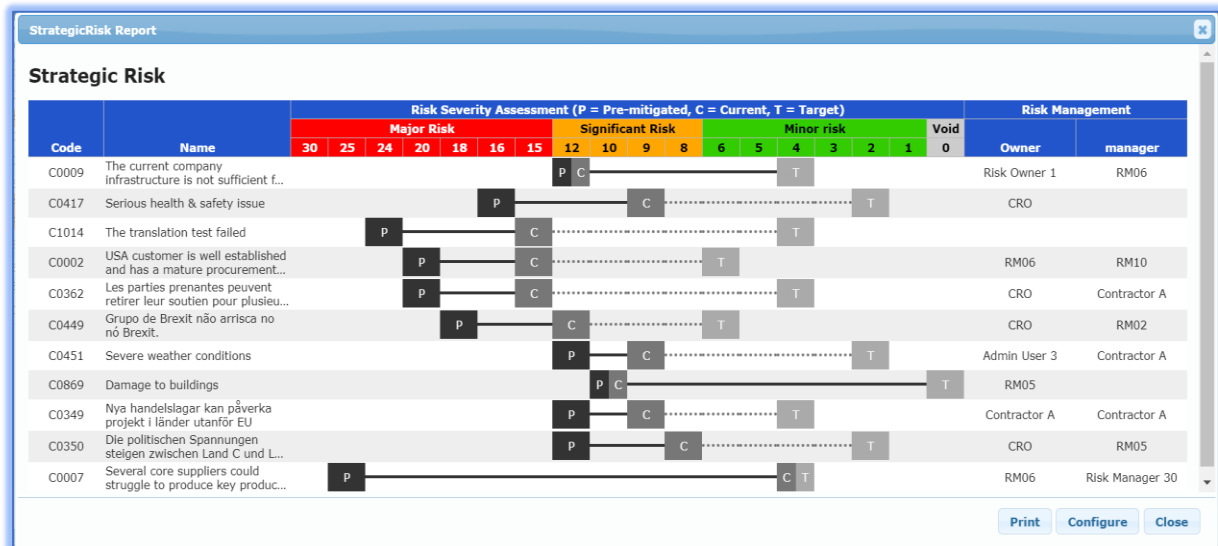
User Risk Activity Dashboard						
User Risk Activity (From '01.01.20' To: '21.05.20')						
Search						
Risk	Name	Total Risk A...	Create	Update	Delete	Other
	Admin User 10	101	6	90	5	0
	manager	12	2	10	0	0
	support	2	0	2	0	0
	Ian Baker	1	0	1	0	0

Viewing 1-4 of 4 5

ERM Dashboards and Reports

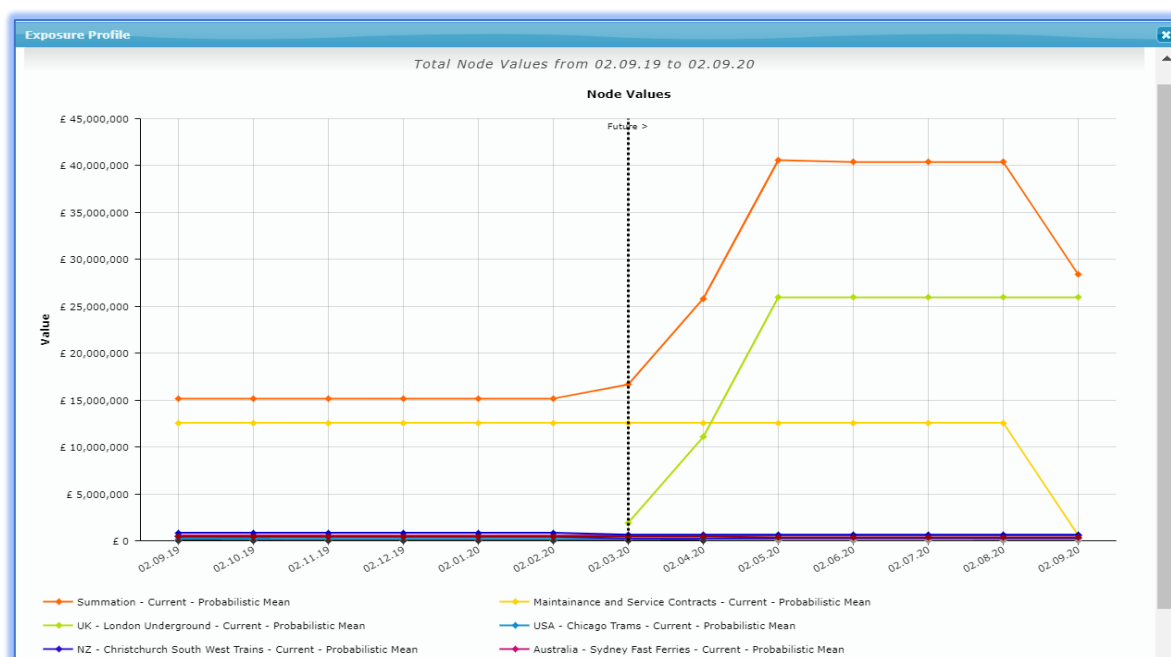
Strategic risk report

This innovative chart is an alternative way of displaying qualitative scoring information than a standard heatmap. It can be used to show pre-mitigated (inherent) risk, as well as the current and target states, and is a great way to communicate risk trajectory in a clean, elegant, and uncluttered way.



Risk exposure chart

A fully user-configurable chart showing quantitative exposure and mitigation spend for all scenarios and levels within the nodal hierarchy, including node aggregation. Rebuild the chart on the fly with live-edit functionality.



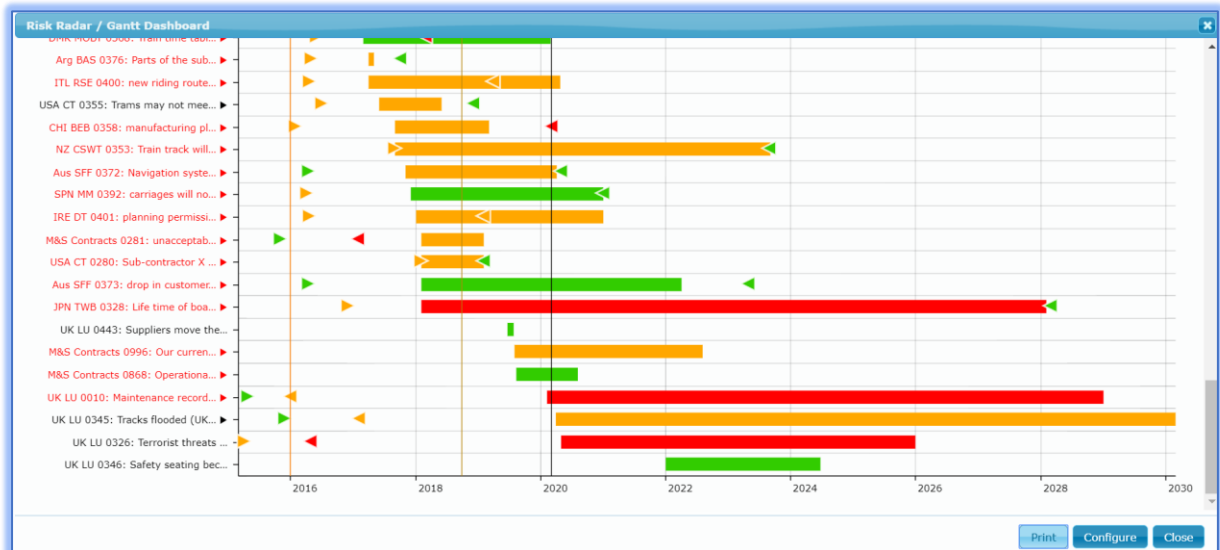
Risk summary dashboard

A graphical view of the profile of risk by status, scoring level and classification with lists of top risks by fiscal impact and by closest proximity to being active. Having the ability to aggregate from node and descendant nodes gives additional flexibility.



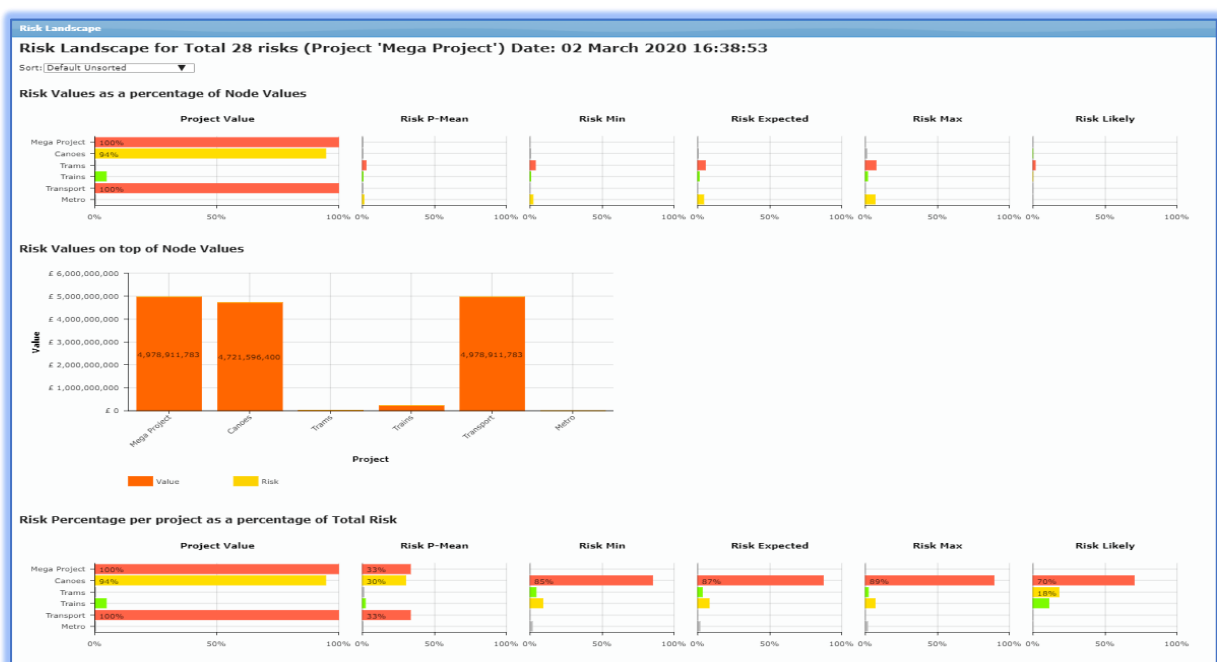
Risk radar

Risks and their associated actions are displayed in Gantt format on a timeline that includes project or business phases, and milestones showing graphically when risks exposure and mitigation planning is active. Clickable to edit risk or action dates or assessment parameters.



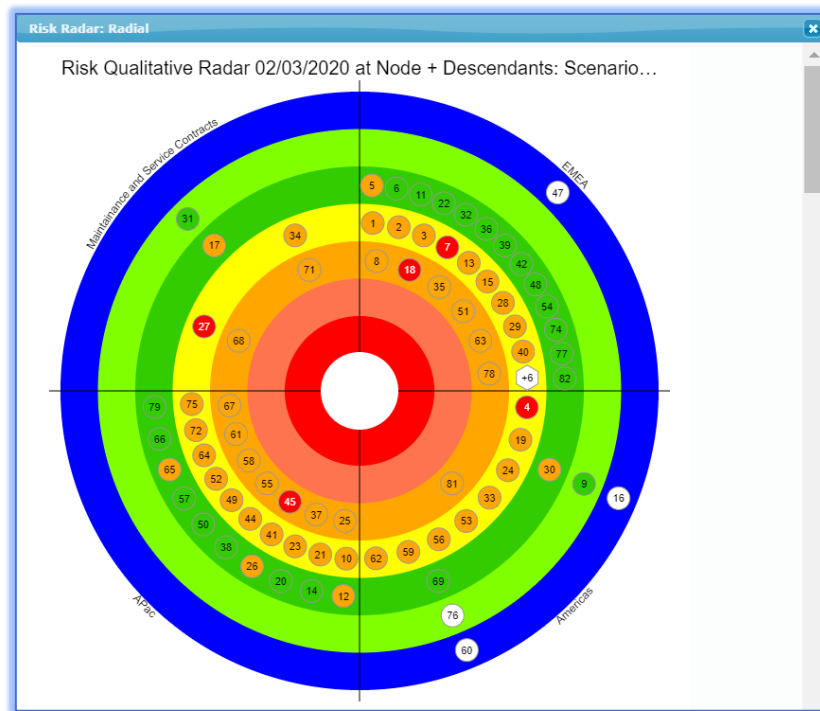
Risk landscape chart

Get a graphical view of your risk landscape, that shows you which projects or nodes are risk hot-spots, and then see how peer-level projects compare with each other. Select from up to six different risk measurement parameters.



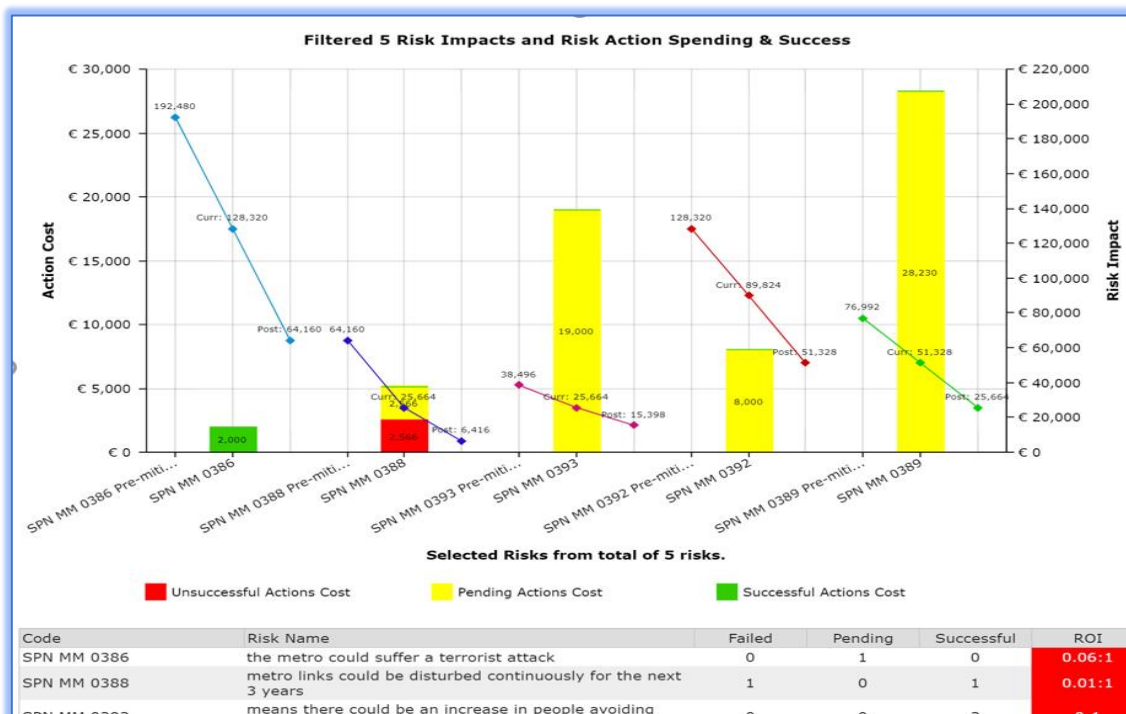
Risk radial chart

Risks or project nodes displayed on a clickable radial 'bullseye' chart helps focus on the significant risks. Configurable using risk parameter selections.



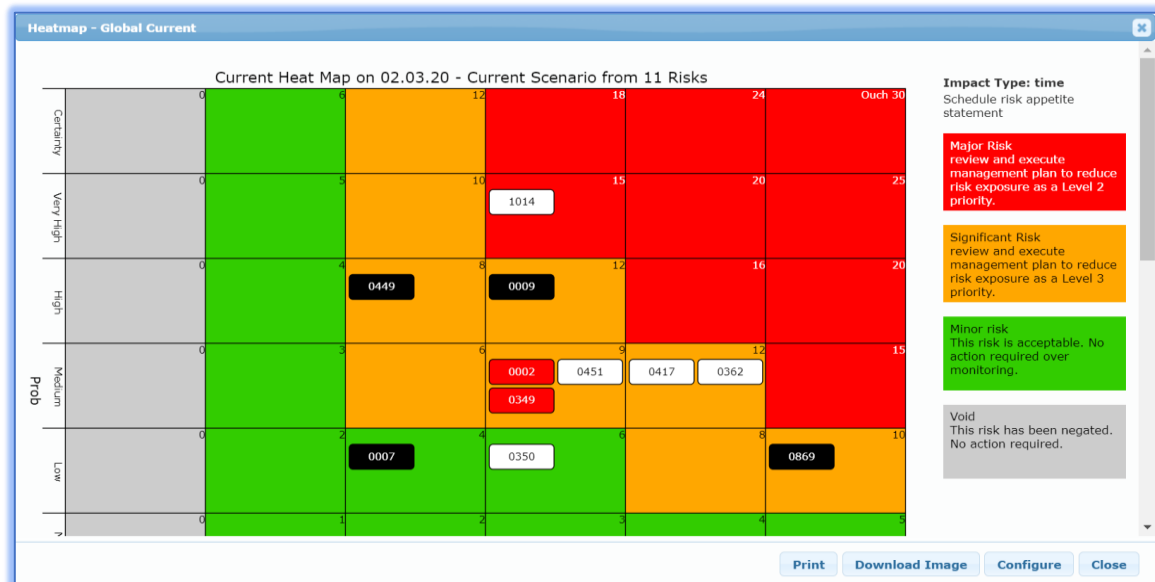
Action effectiveness chart

Displays how much has been spent on actions that have been either successful or unsuccessful, and indicates how much is left to spend on pending actions.



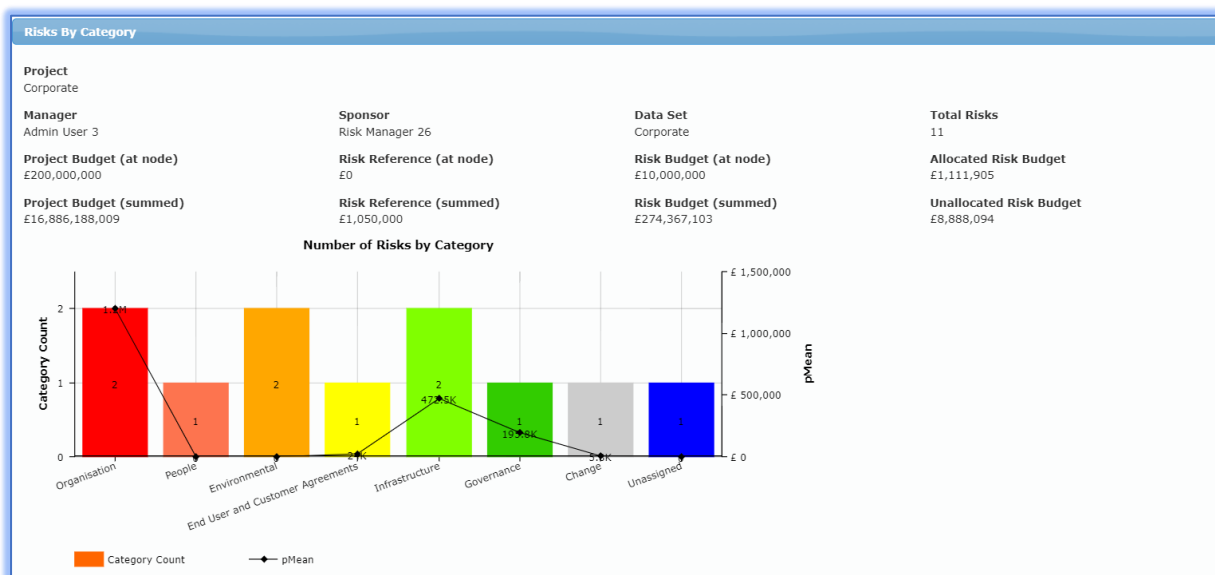
Risk and assumption heatmaps

These reports generate familiar PID heatmaps for any scored impact type for any mitigation scenario. Our click-through functionality takes you straight to the detail.



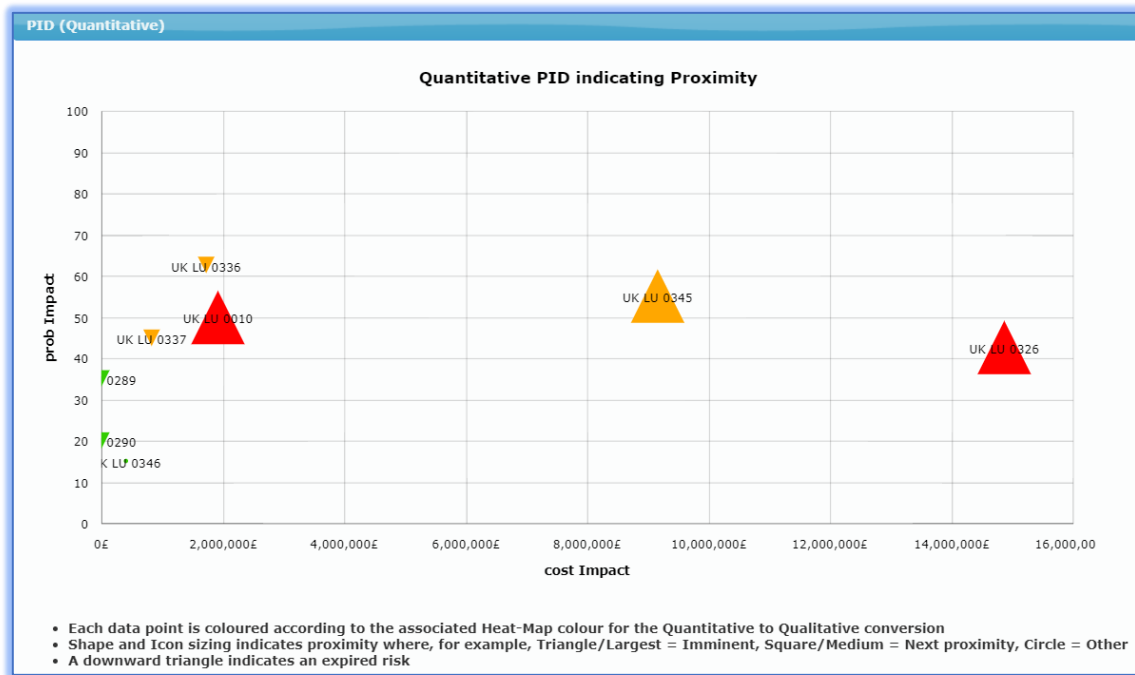
Risk profile chart

Understand the nature and distribution of risk types your business is exposed to. This chart provides a summary of risks and a histogram of number of risks in each category, plus the quantitative risk exposure for each category.



Quantitative PID

Being able to see risks relative to their value, whilst maintaining their individual 'heatmap' score is unusual. ERM can not only display the quantitative values against their probability, but we have created a third dimension to understand the risk Velocity or Proximity. Shapes are used to indicate this third dimension, which the colours indicate the risk heatmap score.



Data field completeness chart

These reports generate histograms displaying mandated field titles and their degree of completeness or, conversely the extent of incompleteness of data.

